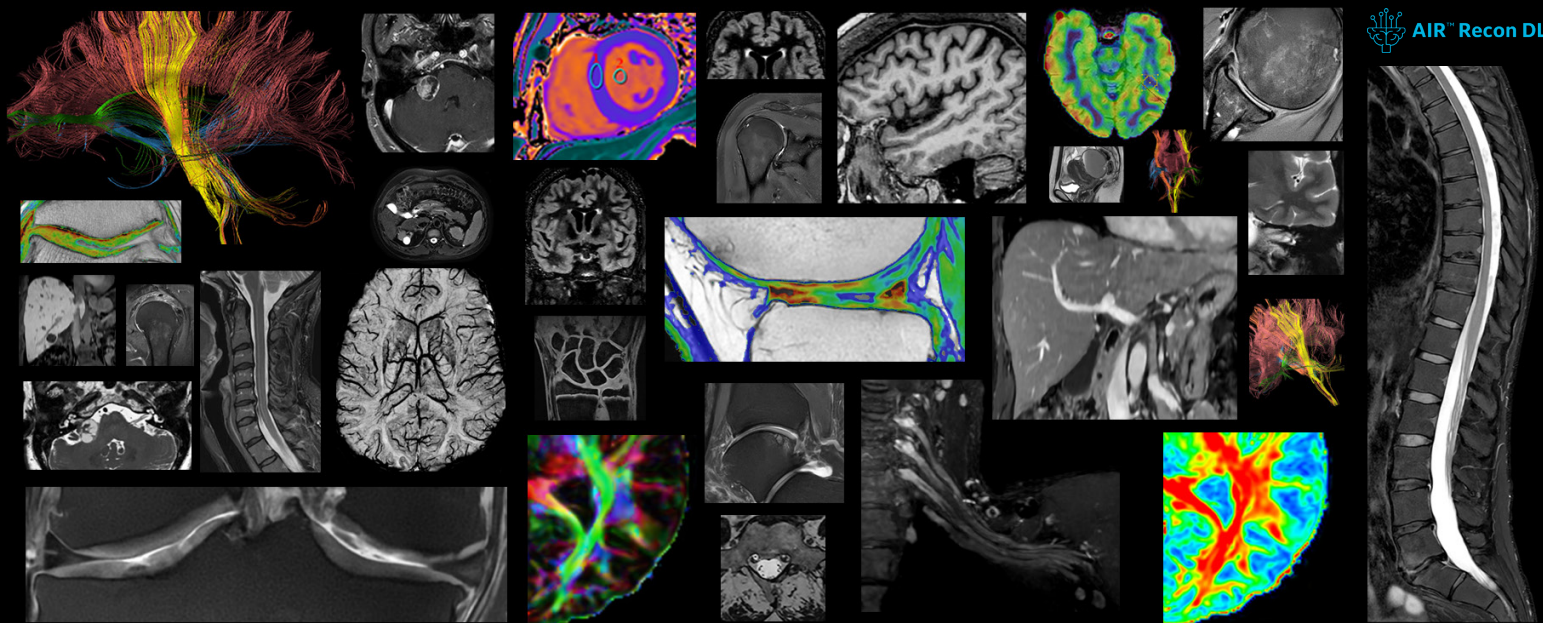




MR 30 for SIGNA™

Future proof with expanded AIR™ Recon DL applications to enable personalized, end-to-end clinical solutions.



Promise and commitment turned into reality.

The MR 30 for SIGNA™ software release brings the much-anticipated extension of AIR™ Recon DL to **3D**, motion-insensitive **PROPELLER** for your SIGNA™ MRI scanner. It also integrates a host of additional applications such as **DTI**, **FSE Flex**, **CartiGram**, as well as **phase sensitive MDE** and **T1 mapping** for cardiac imaging.

With Upgrade and Lift programs available, AIR™ Recon DL is compatible with the vast majority of GE's 1.5T, 3.0T and 7.0T systems. It enables personalized, end-to-end clinical solutions, from patient setup to scanning and to diagnostic report. In addition, MR 30 for SIGNA™ brings further extensions of HyperSense to additional sequences such as SWAN and CE MRA.

By expanding AIR™ Recon DL to 3D and PROPELLER, GE has closed the gaps in our ability to provide improved image quality and patient experience to all our patients across exam types, particularly for brain imaging where we rely heavily on 3D sequences and MSK imaging where PROPELLER is important for reducing image quality variability and eliminating repeat sequences due to motion.

Dr. Tiron Pechet
Shields Health Care Group

MR 30 for SIGNA™ is not yet CE marked. Not available for sale in all regions. Some applications discussed are optional/purchasable. Please contact your local GE representative for more information.

gehealthcare.com/mr

The AIR™ Recon DL Revolution

AIR™ Recon DL is a pioneering, deep-learning based reconstruction algorithm applied to the MR raw data to improve SNR and image sharpness at the foundational level by removing image noise and ringing artifacts while enabling shorter scan times. You can select a tailored SNR improvement level of AIR™ Recon DL based on preference, and AIR™ Recon DL images are directly visualized at the MR console without reconstruction delays.

Today, the AIR™ Recon DL algorithm has been expanded to motion-insensitive imaging with PROPELLER, 3D imaging, and more.*

Expanding AIR™ Recon DL for 2D imaging*

When AIR™ Recon DL was first introduced, it was compatible with most 2D sequences including Spin Echo, Fast Spin Echo, Single-Shot Fast Spin Echo, Gradient and Fast Gradient Echo, and EPI-based diffusion weighted family sequences. Now the capability is expanded to other sequences, such as Diffusion Tensor Imaging, FSE Flex, CartiGram T2 mapping, Cardiac T1 mapping, and Single-Shot Phase Sensitive Myocardial Delayed Enhancement (SSh PS MDE) with Respiratory Triggering.

If you have an upgrade that can enhance your productivity and even bring better image quality, I think there is no doubt that you want to perform the upgrade.

Dr. Alexandre Borges
Santa Casa de Piracicaba
Brazil

WHAT ARE OUR CUSTOMERS SAYING?

Here is what radiologists from 10 clinical sites said in a recent AIR™ Recon DL reader study

100%
said:

AIR™ Recon DL provided **better SNR**

100%
said:

AIR™ Recon DL provided **better or equivalent image SHARPNESS**

99%
said:

AIR™ Recon DL provided **better or equivalent LESION CONSPICUITY**

Introducing AIR™ Recon DL PROPELLER*

Customers who rely on PROPELLER for motion-insensitive and minimal-distortion diffusion-weighted imaging will be pleased to know that AIR™ Recon DL is now compatible with PROPELLER, making it even easier to diagnose challenging anatomies with a multitude of contrasts.

Delivering AIR™ Recon DL for 3D*

3D imaging remains a key component to most clinical MR exams and now it is also compatible with AIR™ Recon DL. AIR™ Recon DL expands its compatibility to most 3D sequences including Cube, Fast Spin Echo, Gradient Echo and Fast Gradient Echo family of sequences. Scan now, reformat later.

SIGNA™ Pioneer 3.0T with AIR™ Recon DL

	Conventional pre-upgrade protocol	AIR™ Recon DL protocol	Exam time reduction %	Average voxel size reduction %
Brain	14:45	8:24	43	10
Cervical spine	12:18	7:09	42	16
Lumbar spine	16:02	9:20	42	33
Shoulder	12:38	8:52	30	18
Knee	14:12	9:20	34	15
Ankle	14:44	7:54	42	42
Prostate	24:25	12:42	48	24
Female pelvis	25:34	16:23	36	30

*Results courtesy of Unison Group Hospitals, UAE

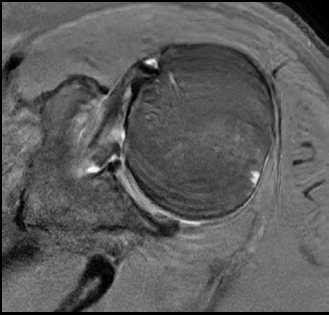
BrainWave CSD & Probabilistic Tractography*

Upgrade your Diffusion Tensor Imaging (DTI) with Constrained Spherical Deconvolution (CSD) for BrainWave. CSD is an improved method for modeling diffusion data from HARDI data sets and intended for multi-shell DTI. Capable of Deterministic and Probabilistic tractography and diffusion parametric maps, including FA, ADC, eADC, AD, RD and Trace. This package also provides pre-processing options for MP-PCA denoising and corrections for intensity inhomogeneity bias, motion and susceptibility artifacts. Use with AIR™ Recon DL for the added sharpness and SNR.

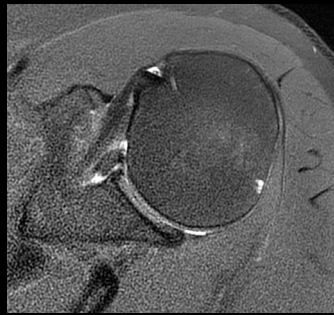


COLLECTIVE MINDS RADIOLOGY

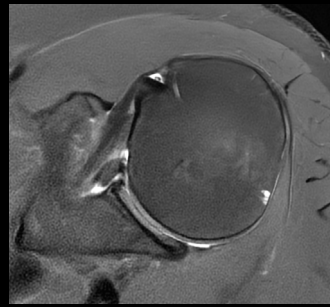
AIR™ Recon DL | PROPELLER



Axial PD FatSat FSE
0.3 x 0.4 x 3 mm
1:48 min



Axial PD FatSat PROPELLER
Conventional
0.4 x 0.4 x 3 mm
2:25 min

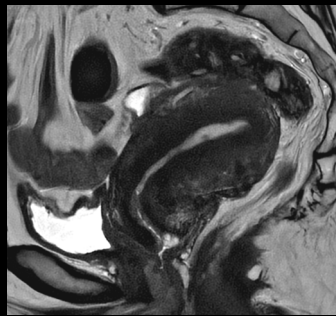
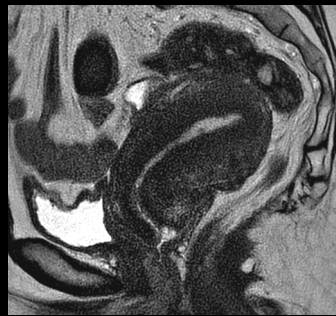


Axial PD FatSat PROPELLER
with AIR™ Recon DL
0.4 x 0.4 x 3 mm
1:58 min

Respiratory or gross patient motion can result in ghosting artifacts with 2D FSE (with or without AIR™ Recon DL (left)). PROPELLER can be used as a motion-insensitive alternative (middle) but can lack in SNR and sharpness. AIR™ Recon DL with PROPELLER (right) provides high resolution and high SNR with a reduced scan time.

Conventional

 AIR™ Recon DL



Sagittal T2 PROPELLER
0.5 x 0.5 x 3 mm
3:23 min

Conventional

 AIR™ Recon DL

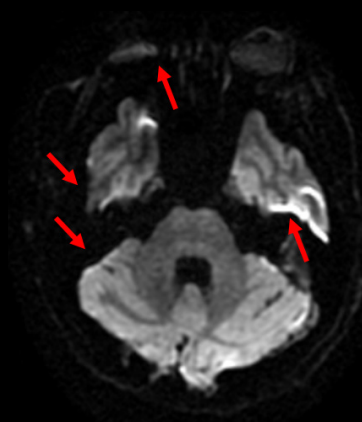


Axial T2 PROPELLER
0.5 x 0.5 x 3 mm
3:44 min

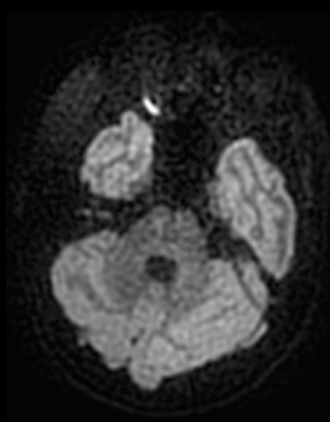
MUSE DWI

Conventional

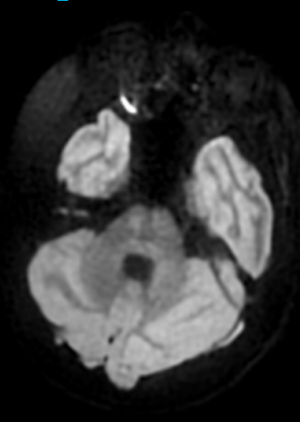
 AIR™ Recon DL



MUSE DW EPI
b=1000
1.6 x 1.5 x 1.5 mm

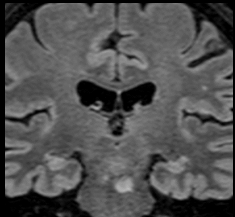


Axial PROPELLER DWI
b=1000
1.6 x 1.6 x 1.5 mm

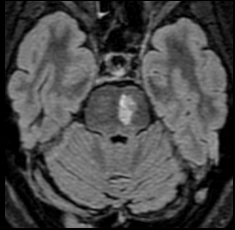


Geometric distortion change can result with MUSE DWI in certain regions (left). PROPELLER DWI offers a distortion-free alternative to DW EPI, but can result in long scan times or low SNR (middle). AIR™ Recon DL with PROPELLER DWI provides high SNR with a reduced scan time.

AIR™ Recon DL | 3D

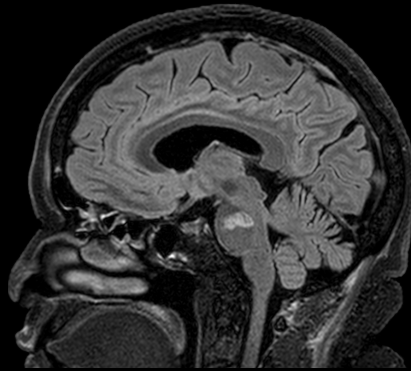


Coronal reformat

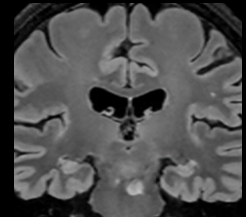
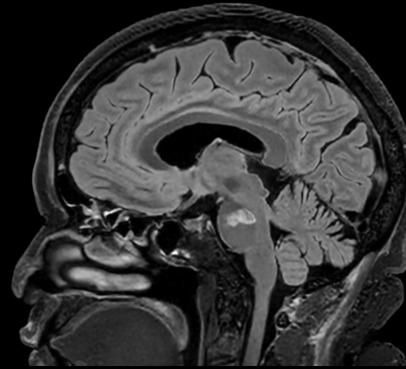


Axial reformat

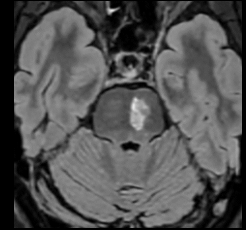
Conventional



 AIR™ Recon DL



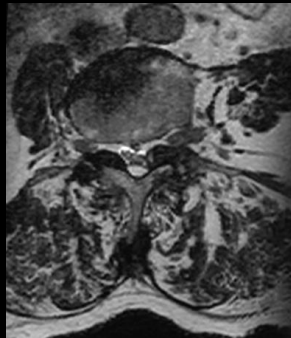
Coronal reformat



Axial reformat

Sagittal Cube T2 FLAIR HyperSense
1 x 1 x 1 mm
4:34 min

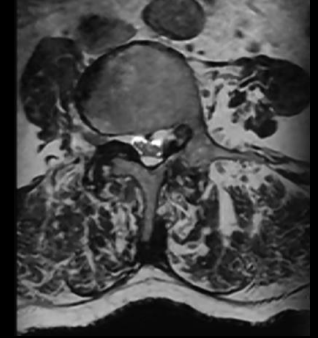
Conventional



Axial reformat



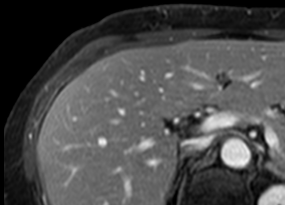
 AIR™ Recon DL



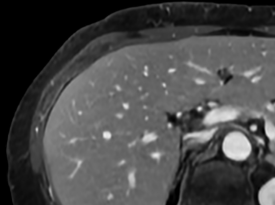
Axial reformat

Sagittal T2 Cube with HyperSense
1 x 1 x 1 mm
5:05 min

Conventional



 AIR™ Recon DL



Conventional



 AIR™ Recon DL



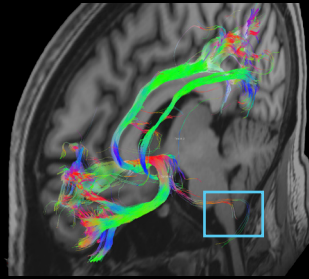
Axial LAVA ASPIR
1.3 x 1.6 x 2.6 mm
18 sec

Coronal reformat

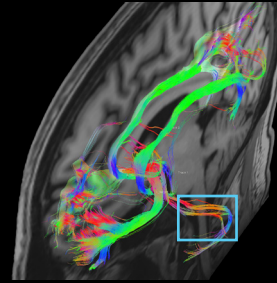
AIR™ Recon DL | 2D enhancements

AIR™ Recon DL Diffusion Tensor Imaging

Conventional



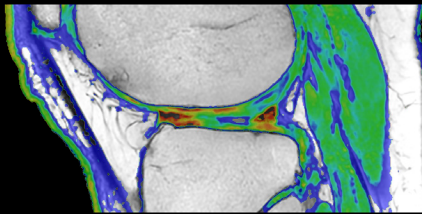
AIR™ Recon DL



ARDL provides clearer visualization and the potential for longer fibre tracking in DTI, as indicated.

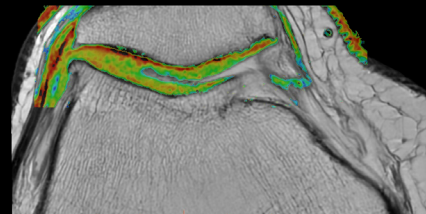
AIR™ Recon DL CartiGram (T2 mapping)

AIR™ Recon DL



Sagittal
0.5 x 0.6 x 3 mm | 5:13 min
ARC = 4

AIR™ Recon DL



Axial
0.4 x 0.4 x 2.6 mm | 3:48 min
ARC = 3

AIR™ Recon DL FSE Flex

AIR™ Recon DL

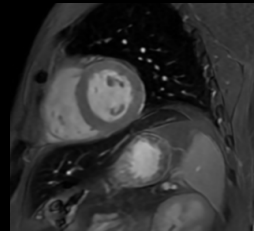


Water In Phase Out of Phase Fat

Two Station Spine
Top Station - 0.7 x 0.8 x 3 mm | 3:15 min
Bottom Station - 0.7 x 0.8 x 3 mm
2:10 min

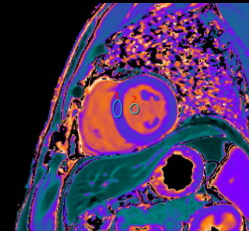
AIR™ Recon DL Cardiac T1 mapping

AIR™ Recon DL



Frame data

AIR™ Recon DL

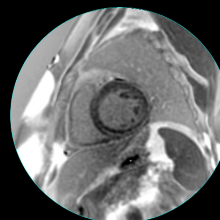


T1Map

Short Axis
1.6 x 2.8 x 8 mm | 10 sec

AIR™ Recon DL Single Shot Phase Sensitive MDE with Respiratory Triggering

Conventional



AIR™ Recon DL



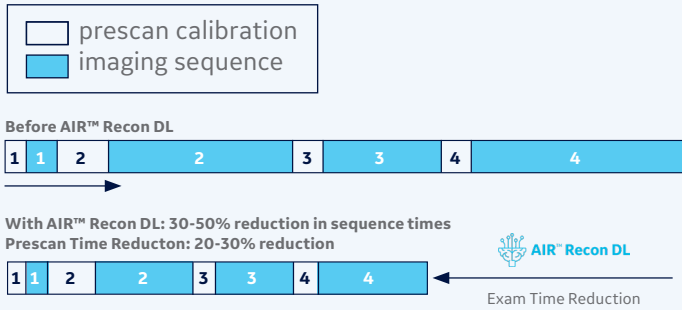
Short Axis

2.6 x 3.0 x 8 mm | 2:53 min

Prescan Time Reduction

Prescans are calibrations that are routinely done between imaging sequences within an exam. While AIR™ Recon DL has already led to significant (30-50%) reductions in exam times, more time savings will be delivered with time-optimized prescan. With no impact on resultant image quality, prescan times are automatically reduced by approximately 20-30% which will contribute to even further reduced exam times. This behind-the-scenes improvement works particularly well with AIR x™ brain and knee.

Prescan Time Reduction



ASL Flexible Label Duration

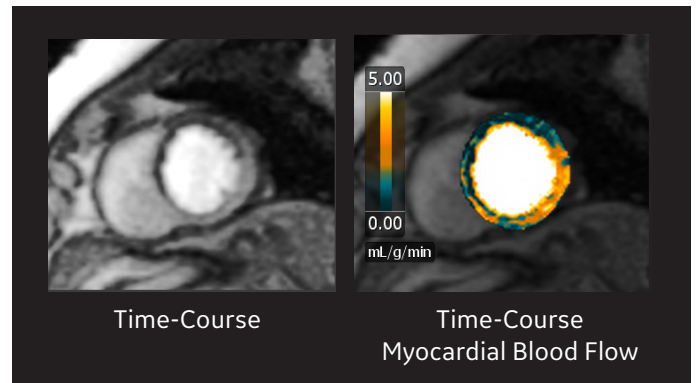
A long-awaited update to GE's 3D pCASL application brings a user-selectable label duration. The longer labeling time will result in improved perfusion SNR and increased robustness to flow pulsatility. This update aligns with the 2022 ISMRM Perfusion Study Group recommendation of long label/long delay acquisition for imaging of geriatric, ischemic and stenotic disease patients where transit times are known to be longer.

HyperSense extensions to CE-MRA and SWAN

HyperSense, GE's industry-first Compressed Sensing acceleration technique, has now been extended to contrast-enhanced MR angiography (3D TOF) and Susceptibility Weighted imaging (SWAN), leading to shorter scan times and/or higher resolution. In addition, SWAN acquisitions can now accommodate image data needs for third-party Quantitative Susceptibility Mapping (QSM) tools.

Time-Course Myocardial Blood Flow Mapping

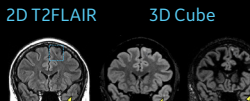
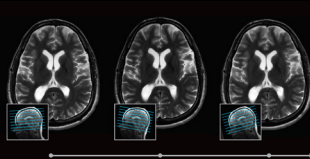
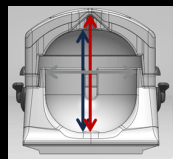
Explore the clinical benefits of AIR™ Recon DL compatible Time-Course MBF mapping with a dual-bolus or pre-bolus protocol for improved rest and stress perfusion exams. Time-Course MBF is compatible with the Quantitative Perfusion module in cvi42 from Circle CVI.



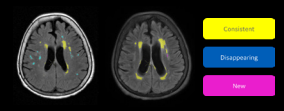
Wireless Gating*

The MR 30 for SIGNA™ release brings wireless Bluetooth gating functionality, delivering a 3-in-1 solution which includes respiratory, plethysmograph (PPG), and ECG. MR compatible up to 3.0T with excellent noise immunity and long battery life.

Disease focused end-to-end Neuro imaging Multiple Sclerosis



AIR™ Recon DL for 2D, PROPELLER and 3D imaging
HyperSense acceleration for 3D imaging
Prospective Motion Correction with PROMO



Brain Volumetry				
Date	Old	NEW	Brain	ICV
2018-08-27	311 cc ³	417 cc ³	248 cc ³	1033 cc ³
Compared to 2012-10-16	+29%	+33%	+25% of ICV	+19.7% of ICV
2018-10-18	453 cc ³	486 cc ³	388 cc ³	1077 cc ³
Compared to 2018-10-18	+44%	+18%	+57% of ICV	+12.4% of ICV

White Matter Hyperintensities				
Date	Total	Completed	New	Disappearing
2018-08-27	19 WMH	16 (71%)	3 (16%)	0 (0%)
Compared to 2012-10-16	+88.4%	+71.4%	+33.3%	+0.0%
2018-10-18	39 WMH	33 (85%)	6 (15%)	0 (0%)
Compared to 2018-10-18	+100%	+100%	+100%	+0%

Volumetry & longitudinal WM lesion monitoring with Quantib

These features are 510(k) cleared in the USA. Not CE marked, not available for sale in all regions.
*wireless gating is available for 3.0T systems only

© 2022 General Electric Company – All rights reserved.

GE Healthcare reserves the right to make changes in specifications and features shown herein, or discontinue the product described at any time without notice or obligation. Contact your GE Healthcare representative for the most current information. SIGNA, GE and the GE Monogram, are trademarks of General Electric Company. GE Healthcare, a division of General Electric Company. GE Medical Systems, Inc., doing business as GE Healthcare.